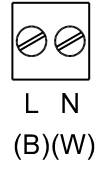


DETAIL "B"



- 800-0213-001 (X3)
- 800-0263-001 (X3)
- 800-0249-001 (X3)
- 800-0260-001 (X3)
- ASM-0493-001

200-0356-002

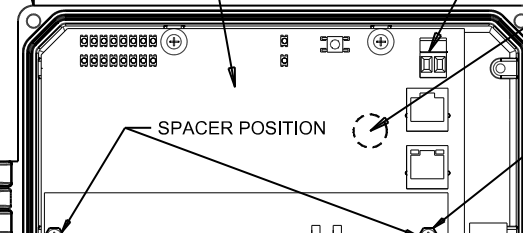
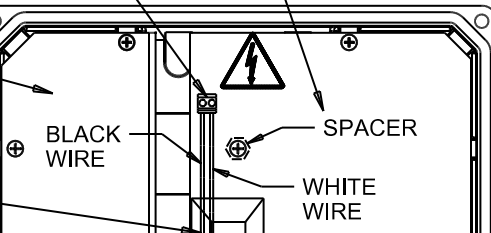
- ASM-0462-013
- 800-0249-001 (X7)
- 800-0210-001 (X4)
- 800-0213-001 (X4)

650-0265-000

850-0138-001

SEE DETAIL "B"

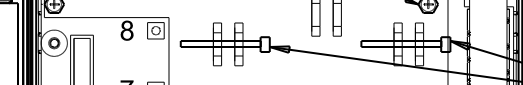
200-0378-006  
800-0249-001 (X4)



IN THIS POSITION INSTALL SPACER 800-0210-001 WITH NUT & L.W. 800-0215-001 & 800-0213-001

120-0150-001  
600-0028-000 (2x)

120-0138-001



850-0108-001

755-0027-000

850-0115-001 (3X)  
850-0108-001 (3X)

12V GND

850-0138-001  
INSTALL BUMPER ON OPPOSITE SIDE FROM PCB

121-0132-001

850-0178-001  
INSTALL LUG ON GREEN WIRE

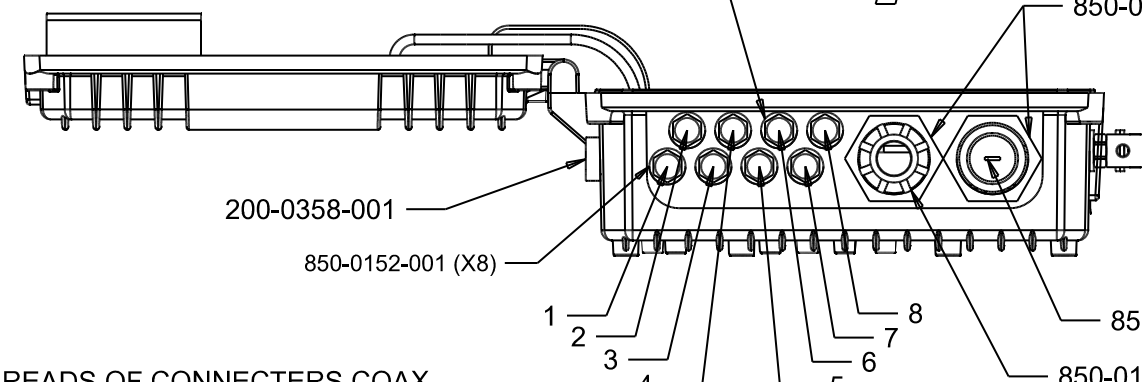
950-0156-001 (2X)

MOUNTING INSTRUCTIONS POWER SUPPLY:

- INSTALL CABLE 120-0132-001 & 120-0150-001 ON POWER SUPPLY 755-0027-000
- INSTALL BRACKET ON ENCLOSURE COVER
- CONNECT CABLES 120-0150-001 & 120-0132-001 ON PCB ASM-0493-001
- CONNECT CABLE 850-0168-001 ON PCB ASM-0493-001

NOTE:

- 1-INSTALL SILICONE ON THREADS OF CONNECTERS COAX.
- INSTALL WASHER RUBBER & FLAT WASHER OUTSIDE.



- 800-0151-001 (X8)
- 800-0228-001 (X8)
- 800-0229-001 (X8)
- 800-0219-001 (X8)
- 800-0268-001 (X8)
- 850-0127-001 (SILICON)

REF.

800-0248-001  
120-0139-002

800-0249-001 120-0151-001 (8X)

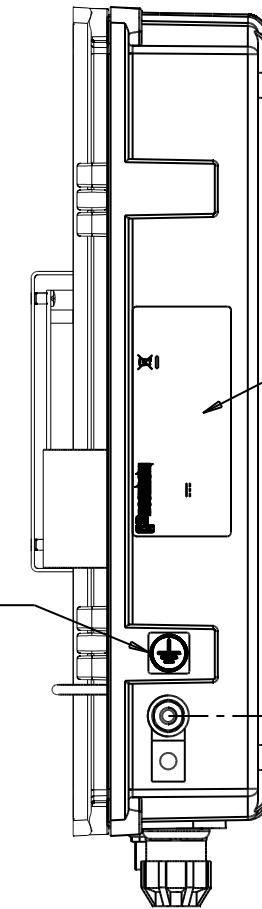
850-0168-001

850-0171-000  
SEE PAGE 3 FOR CONNECTION

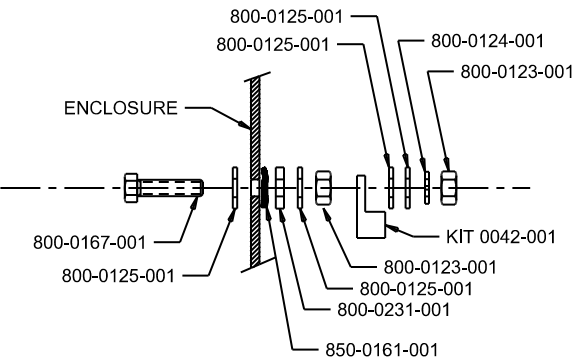
POWER CORD IS CALLED ON TOP BOM  
SEE INSTRUCTION SHEET 180-0228-001 FOR CONNECTION ON THIS SIDE.

INSTALL LABEL 950-0082-000 ON POWER CORD  
PRINT ON LABEL "INDOOR ONLY"

850-0144-001



DETAIL "A"



NOTE:  
2-PUT MEGALOC BETWEEN THE ENCLOSURE AND THE RUBBER WASHER AND ON THE THREADS OF THE SCREW.

NOTE:

3-USE A 5 mm ALLEN (hex) KEY TO SECURE THE 4 SCREWS TO ENSURE THE IP68 WATER PROTECTION OF THE ENCLOSURE. TIGHTEN THE SCREW IN AN X FASHION (TOP-RIGHT, BOTTOM-LEFT, TOP-LEFT, BOTTOM RIGHT).

A TORQUE OF 10 lbs-in ±10% MUST BE APPLIED FOR IP68 CERTIFICATION.

QTY PAR - # / QTY PER - #	ITEM	NUMERO DE PIECES POSITRON POSITRON PART NUMBER	DESCRIPTION	NUMERO DE PIECES MANUF MFG PART NUMBER	REF DES	NOTE
CONFIDENTIEL						
Le contenu de ce document est la propriété exclusive de Positron Access Solutions Corp. à l'exception des renseignements dont Positron Access Solution Corp. a autorisé par écrit la diffusion, le détenteur du document doit:			CONFIDENTIAL			
1) en assurer le caractère confidentiel et empêcher la divulgation et la diffusion totale ou partielle du contenu à un tiers.			The information contained in this document is the property of Positron Access Solutions Corp., except as specifically authorized in writing by Positron Access Solutions Corp. The holder of this document:			
2) l'utiliser aux fins d'exploitation et d'entretien seulement.			1) shall keep all information contained herein confidential and shall protect same in whole or in part from disclosure and dissemination to all third parties.			
			2) shall use same for operating and maintenance purposes only			
TOLERANCES		REF		SCALE		PAGE / SHEET
.XX .XXX DIA				ECHELLE		2 DE 3
± ± .02 ± .010 ± .003						
MAT:		PROCHAIN ASSY:		GRANDEUR		NUMERO DE DESSIN / DRAWING NO.
FIN:		UTILISER:		D SIZE		R05
		USED ON:				DWG-2126-20