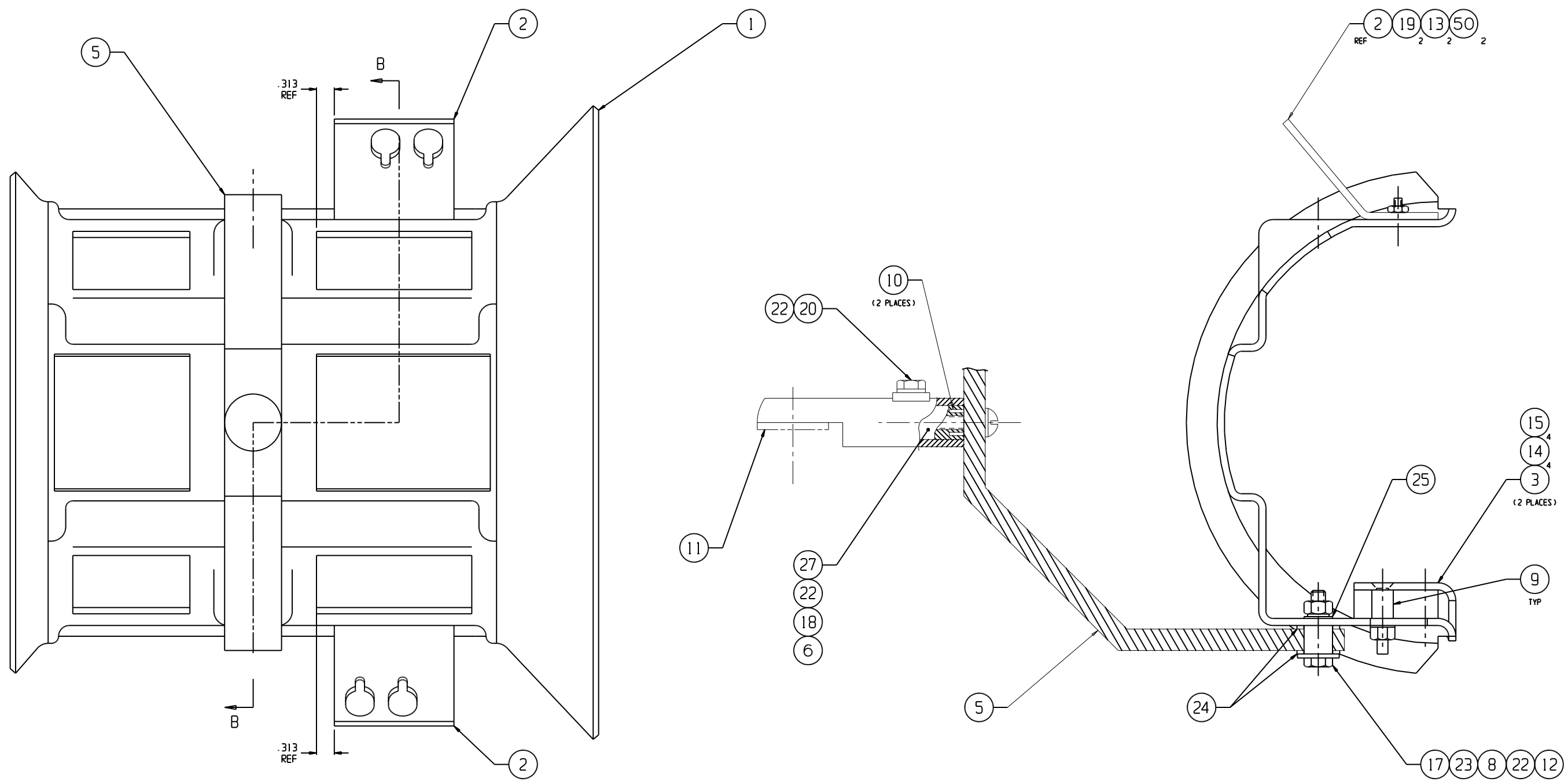


REVISIONS	
1	DATE APPR DATE
2	
3	
4	
5	



SEE NOTE 1

NOTE:

1- TO INSTALL THE HANDLE APPLIES A FORCE OF 5 N-m WITH THE DIGITAL TORQUE WRENCH ON ITEM 17. USE SOCKET 3/8" SQUARE DRIVE, AND 6 POINT SOCKET 7/16" FOR THE SCREW AND THE NUT.

QTE PAR - # / QTY PER - #	ITEM	NUMERO DE PIECES POSITRON POSITRON PART NUMBER	DESCRIPTION	NUMERO DE PIECES MANUF MFG PART NUMBER	REF DES	NOTE
		CONFIDENTIAL			PAGE / SHEET	
		Le contenu de ce document est la propriété exclusive de Positron Inc. à l'exception des renseignements dont du document doit.			1 DE 1	
		1) en assurer le caractère confidentiel et empêcher la divulgation et la diffusion totale ou partielle du contenu à un tiers.			POSITRON INC. POWER DIVISION	
		2) l'utiliser aux fins d'exploitation et d'entretien seulement.			TITRE/TITLE	
					SUPPORT ASS'Y, VIC	
		CONFIDENTIAL			SCALE	
		The information contained in this document is the property of Positron Inc. except as specifically authorized in writing by Positron Inc. The holder of this document.			ECHELLE	
		1) shall keep all information contained herein confidential and shall protect same in whole or in part from disclosure and dissemination to all third parties.			DESSIN/DRAWN BY	
		2) shall use same for operating and maintenance purposes only.			LUC POULIN	
					VERIF. PAR / CHECKED BY	
					22 MAI 2024	
					APPR. PAR / APPR. BY	
		TOLERANCES			GRANDEUR	
		.XX .XXX DIA			D	
		± .02 ± .010 ± .003			SIZE	
		MAT:			NUMERO DE DESSIN / DRAWING NO.	
		NEXT ASSY:			664-378207-101	
		UTILISER:			RELACHER / RELEASE	
		USED ON:			REV 05	